

PRIORITY (優先) 系列

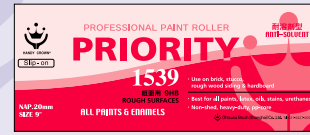
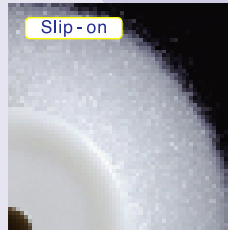
●PRIORITY 1539 (粗面用)



纖維彈性好,毛高達20mm,塗料含量大,工作效率高,最適合大面積的外牆塗刷。

Pile length 20mm with high elastic fibers. Suitable for wider areas of exterior painting.

1539



商品號 CODE	代號 PRODUCT No.	適用對象 APPLICATION SURFACE	規格 SIZE
101910 1539	9HB-N	粗糙面 Rough	9"

Composition: Polyester fiber (毛料: 滌綸纖維)

●PRIORITY 1739/1749 (平滑面—中粗面用)



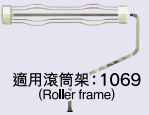
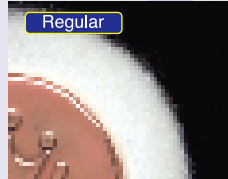
使用柔軟的腈綸纖維,毛高達12mm,塗面細膩美觀,操作簡易。

Pile length 12mm. Medium roller with slender acrylic fiber. Guarantees froth-free, fine and smooth finish. Excellent workability.

1739



1749



商品號 CODE	代號 PRODUCT No.	適用對象 APPLICATION SURFACE	規格 SIZE
101920 1739	9PB-N	光滑面—半粗糙面	9"
101920 1749	9PB-W	Smooth—Semi-rough	9"

Composition: Acrylic fiber (毛料: 腈綸纖維)

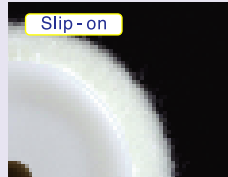
●PRIORITY 3139/3149 (平滑面用)



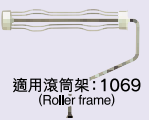
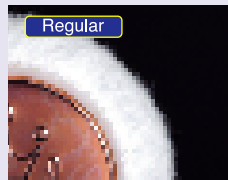
使用高密度的柔軟纖維毛料,毛高達8mm,具有良好的操作性能和耐久性,塗面細膩,適用於平滑面的塗刷。

Pile length 8mm with soft fibers. Suitable for smooth surfaces. Guarantees fine finish, longer life and excellent workability.

3139



3149



商品號 CODE	代號 PRODUCT No.	適用對象 APPLICATION SURFACE	規格 SIZE
101930 3139	9C-286-N	光滑面	9"
101930 3149	9C-286-W	Smooth	9"

Composition: Acrylic fiber (毛料: 腈綸纖維)

有部份塗料,並不適合上述的說明,選擇工具時,必須先確認塗料生產廠家所指定的使用方法。
Usage Directions: For best results, please strictly abide by the method of application specified by Paint manufacturer. Not always applicable to all paints.