

SAFETY EQUIPMENTS (安全用品)

●防護眼鏡 Safety Glasses



可防止雜物、灰塵等侵入，起到保護眼睛的作用。
Protects your eyes from harmful fine particles and dusts.

商品號 CODE	寬度 WIDTH	高度 HEIGHT	重量 WEIGHT
421010 0000	145mm	68mm	40g

●復合過濾口罩 Multi-layer Mask



用于防微細粉塵及防臭，內層含有過濾的活性炭。
For protection against fine particles and bad smells. Activated carbon inside.

商品號 CODE	寬度 WIDTH	高度 HEIGHT	重量 WEIGHT
421010 0001	135mm	123mm	15g

●防塵口罩 Dustproof Mask



用于防輕粉塵。
For protection against small particles.

商品號 CODE	寬度 WIDTH	高度 HEIGHT	重量 WEIGHT
421010 0002	130mm	110mm	5g

●防滑手套 Nonslip Gloves



防滑手套，安全、耐用。

Nonslip glove, safe & tough.

商品號 CODE	422010 0000
材料 Material	滌綸和綿混紡 +合成橡膠 Polyester & Cotton +Synthetic rubber

●工具包 Tool Bag

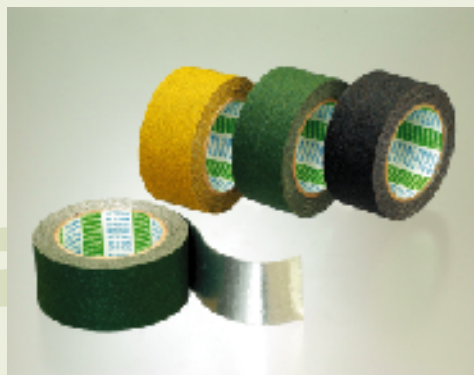


方便您攜帶油漆時需要的工具。

Convenient to carry your painting tools.

商品號 CODE	423010 0000
材料 Material	帆布
規格 SIZE	高(H) 約270mm 寬(W) 約195mm 厚(D) 約90mm

●防滑膠帶 Nonskid Tape



防滑膠帶，祇需貼在地面，就能起到防滑功能，可貼在混凝土，金屬，瓷磚，石板等各種材質的表面，經久耐用，防滑效果持久。

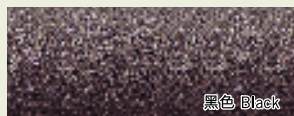
This outdoor nonskid tape can be applied to concrete, metal, tile, stone, and other various surfaces. The nonskid property of this tape will last a long time.



※施工前，必須把被貼面清掃干淨，表面如有油或水的話，必須完全清理。
Keep the surface clean (Remove oil and water from the surface before use).

[主要材料]：鋁箔+砂粒(附界面分離膜)
[Material]：Aluminume foil & aggregate (with release liner)

商品號 CODE	膠帶顏色 TAPE COLOR	膠帶寬 TAPE WIDTH	長度 TAPE LENGTH
421500 0050	黑色	50mm	5m
421501 0050	綠色	50mm	5m
421502 0050	黃色	50mm	5m



黑色 Black



綠色 Green



黃色 Yellow

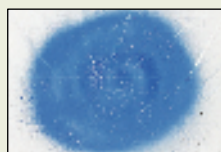
●靜電處理 Corona Treatment

靜電處理是一種用靜電電擊薄膜表面以提高薄膜對塗料的附着力之特殊技術。

Corona Treatment is a special technology that enforces static electricity on the film surface increasing the strength of paint adhesion on the film surface.

●靜電處理膜與非靜電處理膜的比較 Comparison Sample

下圖是塗料乾燥後，用手輕揉一下之後的狀態
Following pictures show the comparison of the paint conditions applied on Corona Treated Film and Normal PE Film when the paint is dried and rubbed lightly.



經過靜電處理膜
Corona Treated Film

塗料不脫落，顯示塗料與塑料膜間的附着力強。

The picture shows that the paint does not come off, which proves the strong adhesiveness between paint and film.

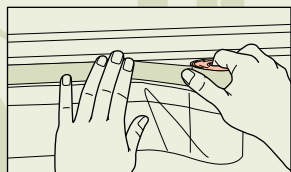


未經靜電處理膜
Normal PE Film

部分塗料脫落，顯示塗料與塑料膜間的附着力弱。

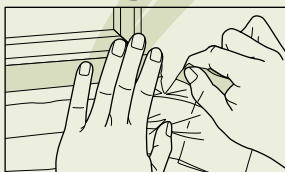
The picture shows that the paint is lost partially, which proves the insufficient adhesiveness between paint and film.

●保護膜的使用方法 Masker usage



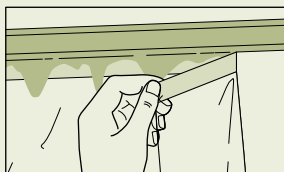
①貼保護膜時，把中指或食指插入紙管，以保持操作穩定。

Insert your middle or forefinger into the mask core in order to support masking.



②貼好後，先用手把膠布(紙)撕開後，再小心地把薄膜拉開。

Tear up the tape first, then film carefully at the end of masking.



③上完油漆後，小心地把保護膜拉掉。

Remove the masker carefully after painting.